



25 Eagle Crescent, St. Helens, WA11 8BG

Asking Price £250,000

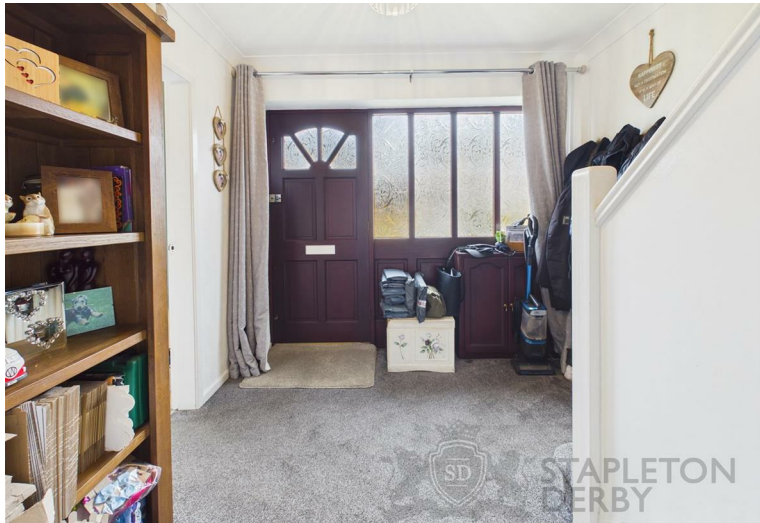


Perfectly situated in the charming Rainford village, this delightful semi-detached family home on Eagle Crescent offers a perfect blend of comfort and convenience. With three well-proportioned bedrooms, this property is ideal for families seeking a welcoming space to call home.

Upon entering, you are greeted by a spacious entrance hall that leads to an inviting open-plan lounge and dining area, perfect for both relaxation and entertaining. The modern fitted kitchen is a highlight, providing a functional space for culinary pursuits. The family bathroom features a white suite, ensuring practicality for everyday living.

The property boasts a sun trap rear garden, an ideal spot for enjoying warm summer days or hosting gatherings with friends and family. Additionally, the driveway at the front provides ample parking space and leads to a detached garage, offering further storage options.

Situated close to local shops, amenities, and quality schools, this home is perfectly positioned for family life. The surrounding area also offers lovely walks, allowing you to enjoy the natural beauty of the countryside. With no onward chain, this property is ready for you to move in and make it your own. Don't miss the opportunity to view this charming home in a sought-after location.





 STAFF
DERBY





SD STAPLETON
DERBY

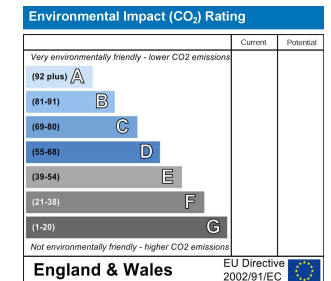
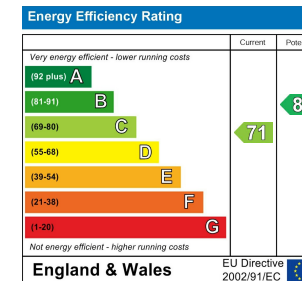
Stapleton Derby

1 The Old Smithy, Church Road, Rainford, St Helens, WA11 8HD

Tel: 0151 430 0717 01744 889 999

office@stapletonderby.co.uk

www.stapletonderby.co.uk



IMPORTANT NOTICE TO PURCHASERS

We endeavor to make our sales particulars accurate and reliable, however, they do not constitute or form part of an offer or any contract and none is to be relied upon as statements of representation or fact. Any services, systems and appliances listed in this specification have not been tested by us and no guarantee as to their operating ability or efficiency is given. All measurements have been taken as a guide to prospective buyers only, and are not precise. If you require clarification or further information on any points please contact us. Fixtures and fittings other than those mentioned are to be agreed with the seller.